

MTR11 400



Engineered for demanding applications, the MTR11 400 motor wheel delivers outstanding **performance** where **strength** and **precision** are key. It tows up to 20 tons and support a vertical load of 4000kg, it is built for the **toughest** jobs. The brushless technology ensures smooth and efficient operation, especially at low speeds, offering the control you need when it matters most.

WHY CHOOSE THE MTR11 400?

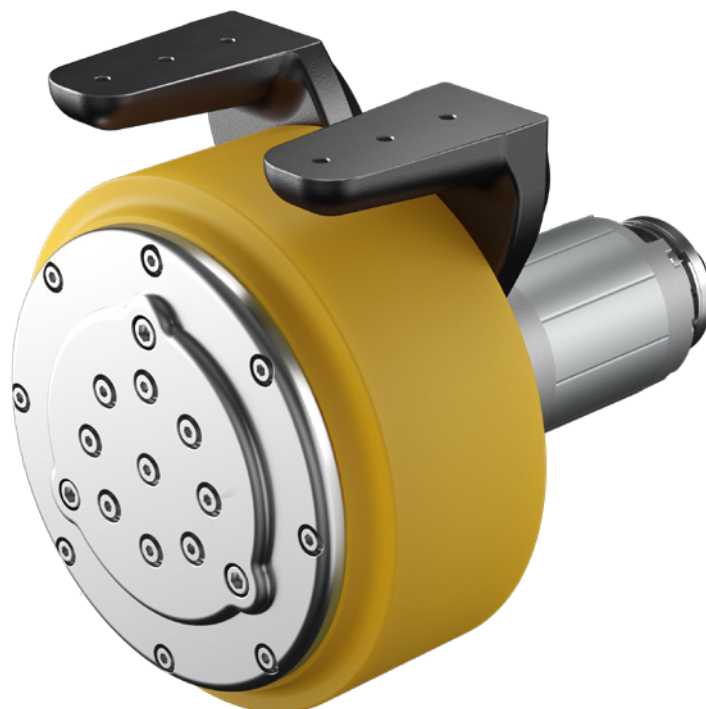
- **Heavy-duty** capabilities for industrial use
- **High precision** even at low speeds
- **Robust design** supporting up to 4000kg (vertical load)
- Advanced **brushless technology** for greater efficiency and durability
- Optional separate **control board** for flexible system integration



MTR11 400



Heavy-duty applications
 AC, DC, BLS motors available
 Driver available separately



Features	
Wheel diameter	400mm
Max speed	4,5Km/h
Power output up to	up to 3500W
AC Power supply	36V to 400V AC
DC Power supply	36V to 400V DC
Motor type	BLS - Brushed - Induction motor
Integrated encoder (BLS version)	Sin cos - Hall
Max payload	4000Kg
IP	44-65
Options	
Electromagnetic parking brake	
Encoder	
Available separately driver	
Thermal sensor	
Customized tires available on request	