

# TORQUE MOTORS

Designed for **maximum performance and efficiency**, our **synchronous brushless motor** delivers **high torque** in a **compact design**, making it the ideal choice for demanding applications.

## WHY CHOOSE IT?

**High efficiency** and reduced energy consumption

**High pole count** for precise control

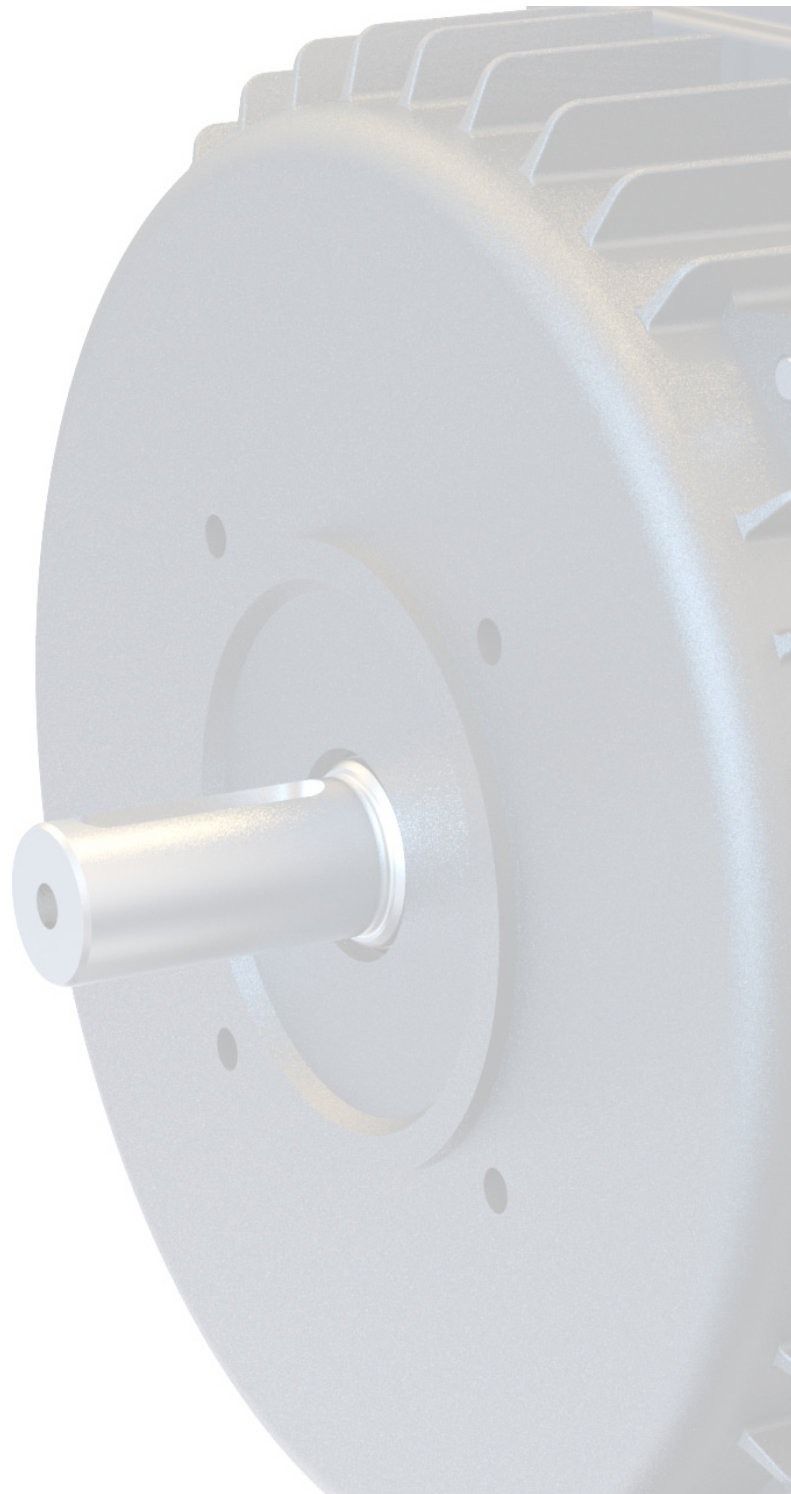
**Low Speed High Torque version** for gearless applications

**Available with internal or external rotor** for maximum versatility

**Wide voltage range:** from 24V to 400V

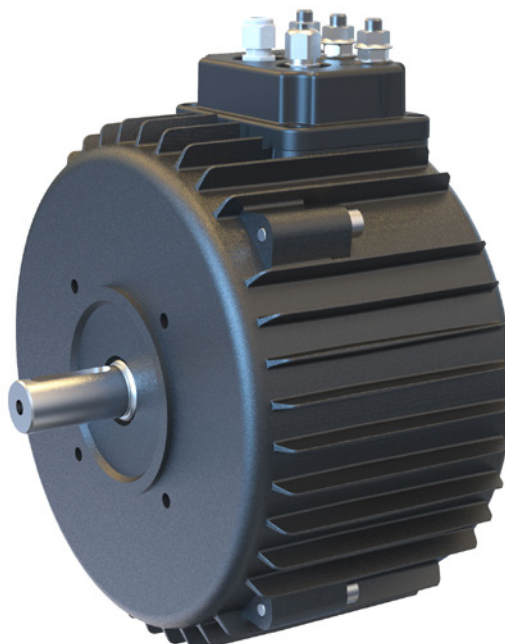
**Available electronics** for seamless integration

Discover the brushless motor that combines **power, compactness and reliability.**



# TORQUE MOTORS

Permanent magnets  
 Maintenance free  
 High efficiency  
 Silent operation  
 Low-speed high-torque version available  
 Driver available



Features		
Model	PMM185	PMM295
Ø stator	252mm	400mm
Power output	up to 10kW	up to 40kW
Power supply	36V to 400V	36V to 400V
Poles	from 20 to 22	from 20 to 34
Service duty	S1-S2-S3	S1-S2-S3
Position trasducer	Hall effect sensor - Sin-cos	Hall effect sensor - Sin-cos
Mechanical configuration	B3 - B5 - B14 external rotor	B3 - B5 - B14 external rotor
Options		
Electromagnetic parking brake		
Encoder		
Electronic driver		
Thermal sensor		
Sensorless		