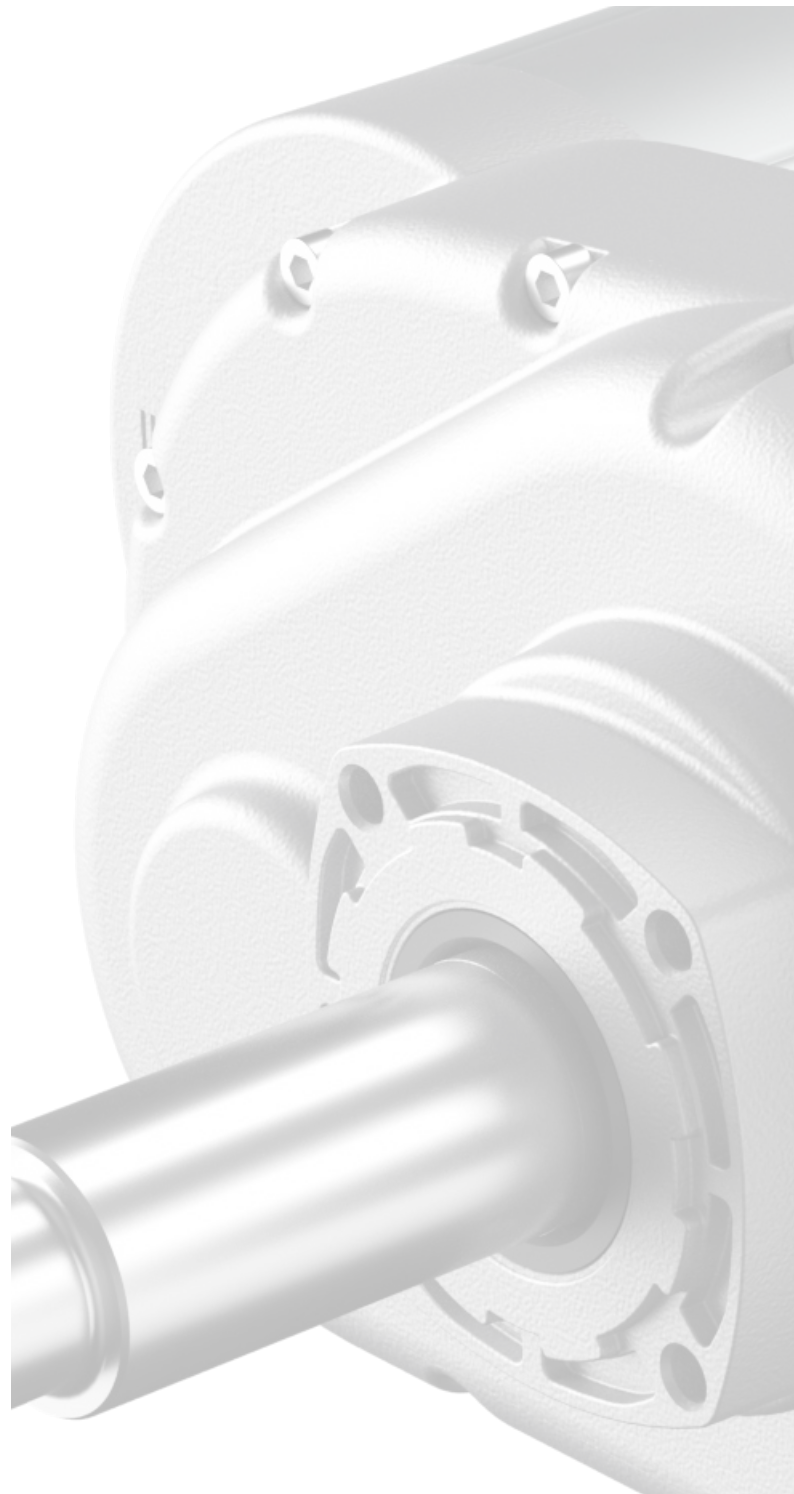


MPR19

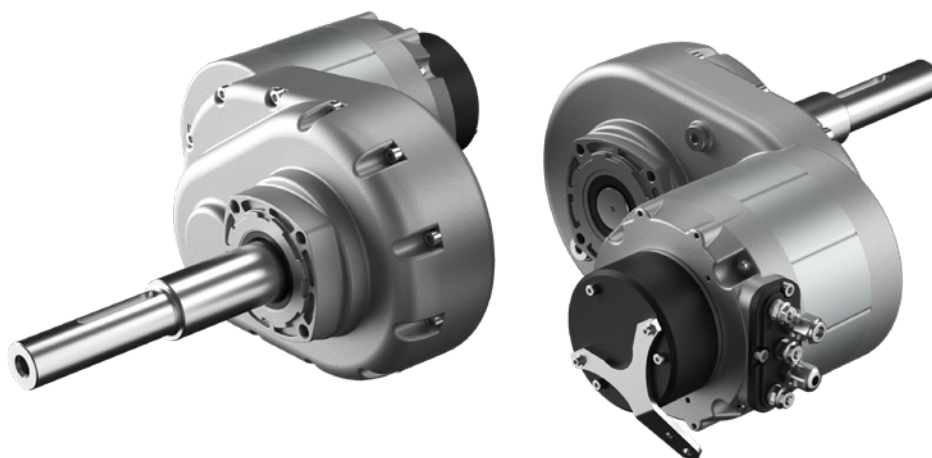
The MPR19 offers unparalleled performance, reliability, and customization to meet the demands of the most rigorous industrial applications.

WHY CHOOSE MPR19?

With the MPR19 gear motor, you gain access to a powerhouse of engineering prowess designed to elevate your machinery's performance. Our commitment to quality and customization ensures that you get a drive unit perfectly suited to your needs, providing reliability and efficiency in every operation.



MRP19



Robust Design for Heavy Loads
 Possibility of Dual Drive, Transaxle
 Customizable shaft
 AC, DC, BLS motors available

Features	
Max payload	650 kg
Type of gear motor	Parallel Axis
Power output	600W to 3000W
AC Power supply	12 to 96V AC
DC Power supply	12 to 230V DC
Reduction ratio	25:1
Max lenght (overall dimension)	custom
Applicable motor type	Permanent Magnet MP100 - Brushless Motor BL65 - BL80 AC motor
Options	
Electromagnetic parking brake	
Encoder	
Electronic driver	
Thermal sensor	
Customized shaft and dimensions available on request	

