



ENERGY



A GLOBAL GROUP	03
OUR PRESENCE	05
DC MOTORS	06
DC/AC GEAR MOTORS - Parallel Axis	07
DC/AC GEAR MOTORS - Right angle worm gear	08
DC/AC TRACTION SYSTEMS	09
MOTOR WHEELS	10
DC/AC DUAL DRIVE SYSTEMS	11
STEERING SYSTEMS	11
THE VALUE OF PEOPLE BEHIND THE PRODUCT.	12



A GLOBAL GROUP



Amer Group is a global enterprise with 6 production facilities throughout northern Italy, Switzerland and Germany. 3 well-integrated branches provide sales, distribution & after-sales support around the world.

This network has been growing for 40 years, thanks to our commitment, to small daily improvements and especially to the strategic choice to reinvest our profits in Research & Development and facilities.

Our comprehensive custom solutions, such as **generators, electronic control systems, DC motors, traction and linear motion systems**, have been developed to carefully satisfy our international partners' needs.

Thanks to them, and to a tight-knit team that shares the company vision, we have become an important key player and a worldwide point of reference.

Many people talk about innovation, but only a few can claim to be really innovative.



Francesco Battistella, *Chairman - AMER S.p.A.*

A photograph of a modern glass building with a grid pattern of windows. The building is set against a blue sky with scattered white clouds. In the foreground, there are branches with autumn leaves in shades of orange, brown, and green. The overall scene is bright and clear.

A CONSTANT **GROWTH**

Building the new AMER headquarters in Valdagno, North Italy.
Another milestone for a strategic growth.

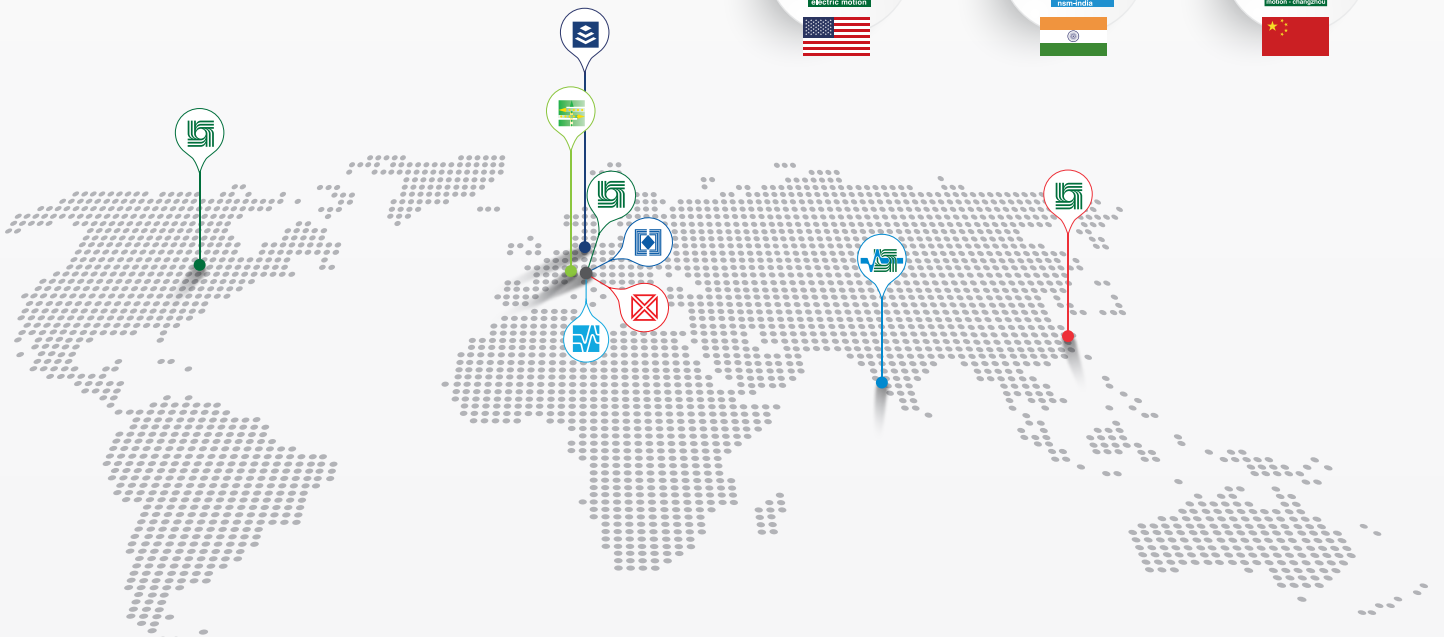


OUR PRESENCE



MANUFACTURING FACILITIES

WORLDWIDE DISTRIBUTION, TECHNICAL SUPPORT





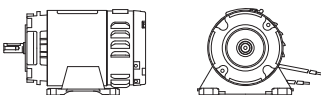
Model	Stator ∅ [mm]	Voltage [V]	RPM	Output Power [W]	Duty	Protection class
DC Permanent Magnet						
MP56	78 - 82	12 ÷ 180	on request	15 ÷ 250	S1 - S2 - S3	IP20 - IP44
MP75	101	12 ÷ 180	on request	100 ÷ 600	S1 - S2 - S3	IP20 - IP44
MP80	110 - 114	12 ÷ 180	on request	100 ÷ 1000	S1 - S2 - S3	IP20 - IP44 IP54 - IP55
MP100	100 - 145	12 ÷ 180	on request	300 ÷ 1800	S1 - S2 - S3	IP20 - IP44 IP54 - IP55
MP135	172 - 177	12 ÷ 180	on request	500 ÷ 2500	S1 - S2 - S3	IP20 - IP44
DC Brushless						
BL65	114	12 ÷ 400	on request	100 ÷ 1000	S1 - S2 - S3	IP44
BL80	145	12 ÷ 400	on request	300 ÷ 2500	S1 - S2 - S3	IP44



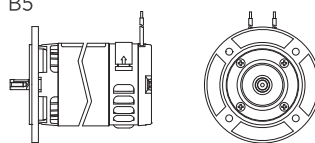
On request: electromagnetic brake, electronic driver, encoder.

STANDARD FRAMES

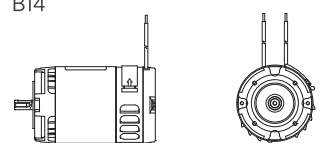
B3



B5




B14



CUSTOM FRAMES AVAILABLE ON REQUEST

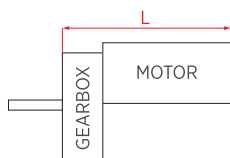


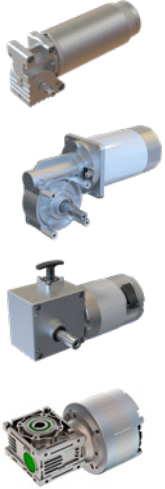
Model	Voltage		RPM	Output Power [W]	Gearbox	Type L [mm]	BLS 
	DC [V]	AC					
MRP5	12 ÷ 180	---	on request	350 ÷ 800	parallel axis	max 250	---
MRP4	12 ÷ 180	---	on request	60 ÷ 800	parallel axis	max 300	✓
MRP6	12 ÷ 180	115 ÷ 230	on request	150 ÷ 1100	parallel axis	max 300	✓
MRP10	12 ÷ 180	115 ÷ 230	on request	400 ÷ 1100	parallel axis	max 350	✓
MRP11	12 ÷ 180	12 ÷ 96	on request	300 ÷ 2500	parallel axis	max 400	✓
MRP12	12 ÷ 180	---	on request	400 ÷ 600	parallel axis	max 300	✓
MRP14	12 ÷ 180	---	on request	200 ÷ 1100	parallel axis	max 250	✓
MRP15	12 ÷ 180	115 ÷ 230	on request	200 ÷ 1100	parallel axis	max 300	✓
MRP16	12 ÷ 180	---	on request	50 ÷ 200	parallel axis	max 150	✓
MRP17	12 ÷ 180	---	on request	150 ÷ 500	parallel axis	max 200	✓

On request: electromagnetic brake, electronic driver, encoder.

OVERALL DIMENSIONS

Parallel axis



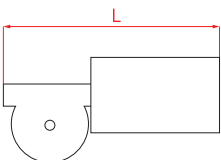


Model	Voltage		RPM	Output Power	Gearbox	Type	BLS
	DC [V]	AC					
AOMPI25	12 ÷ 180	---	on request	50 ÷ 100	right angle worm gear	max 200	---
AOMPI40	12 ÷ 180	115 ÷ 230	on request	20 ÷ 400	right angle worm gear	max 300	✓
MRO7	12 ÷ 180	115 ÷ 230	on request	60 ÷ 750	right angle worm gear with disengagement lever	max 310	✓
VSF1	12 ÷ 180	---	on request	100 ÷ 1800	right angle worm gear	max 500	✓







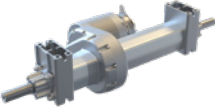
On request: electromagnetic brake, electronic driver, encoder.

OVERALL DIMENSIONS

Right angle worm gear

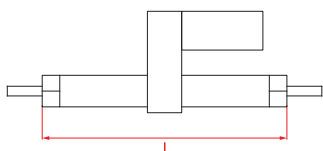




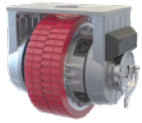
Model	Stator ∅ [mm]	Voltage		RPM	Output Power [W]	Gearbox	Type L	BLS 
		DC [V]	AC					
 AOMPDIF	up to 82	12 ÷ 230	---	on request	40 ÷ 350	right angle worm gear	custom	✓
 MRP13D	up to 101	12 ÷ 230	---	on request	60 ÷ 500	parallel axis	custom	---
 MRP4D	up to 114	12 ÷ 230	---	on request	60 ÷ 800	parallel axis	custom	✓
 MRP9D	up to 114	12 ÷ 230	12 ÷ 96	on request	100 ÷ 900	parallel axis	custom	✓
 MRP8D	up to 158	12 ÷ 230	12 ÷ 96	on request	400 ÷ 2000	parallel axis	custom	✓
 MRP19D	up to 158	12 ÷ 230	12 ÷ 96	on request	600 ÷ 3000	parallel axis	custom	✓

On request: electromagnetic brake, electronic driver, encoder.

OVERALL DIMENSIONS



MOTOR WHEELS

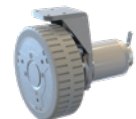
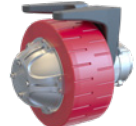
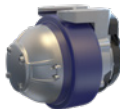


Model	Wheel	Height	Max speed	Voltage	Output Power	BLS
	∅	[mm]	[Km/h]	[V]	[W]	

Permanent Magnet DC Motor Wheel

MTRMP 250	250	265	8	12 ÷ 96	800	---
MTRMP 300	300	315	10	12 ÷ 96	1100	---

Upon request MTRMP: brake solutions, electromagnetic brake, band brake, disk brake, encoder, manual/electric steering system, electronic driver.

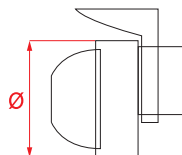
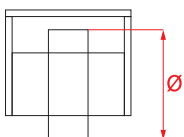


Model	Wheel	Height	Voltage		Output Power	BLS
			DC	AC		
	∅	[mm]	[V]		[W]	

MTR11 150	150	152	12 ÷ 180	---	300	✓
MTR11 200	200	203	12 ÷ 180	---	600	✓
MTR11 230	230	245	12 ÷ 180	---	600	✓
MTR11 250	250	265	12 ÷ 180	12 ÷ 96	900	✓
MTR11 300	300	310	12 ÷ 180	12 ÷ 96	1500	✓
MTR11 350	350	386	12 ÷ 180	12 ÷ 96	2500	✓
MTR12	250	285	12 ÷ 180	---	600	✓
MTR18	up to 200	---	12 ÷ 180	---	600	✓

Upon request MTR11: electromagnetic brake, encoder, wheel material, electronic driver.

OVERALL DIMENSIONS



DC/AC DUAL DRIVE SYSTEMS



Model	Stator ∅ [mm]	Voltage		RPM	Output Power (each) [W]	Gearbox	Type L [mm]	BLS POWER
		DC [V]	AC					
MRP13	up to 101	12 ÷ 180	---	on request	60 ÷ 500	parallel axis	custom	---
MRP17	up to 114	12 ÷ 180	---	on request	150 ÷ 500	parallel axis	max 200	✓
MRP6	up to 177	12 ÷ 180	115 ÷ 230	on request	150 ÷ 1100	parallel axis	max 300	✓
MRP11	up to 145	12 ÷ 180	12 ÷ 96	on request	300 ÷ 2500	parallel axis	max 400	✓

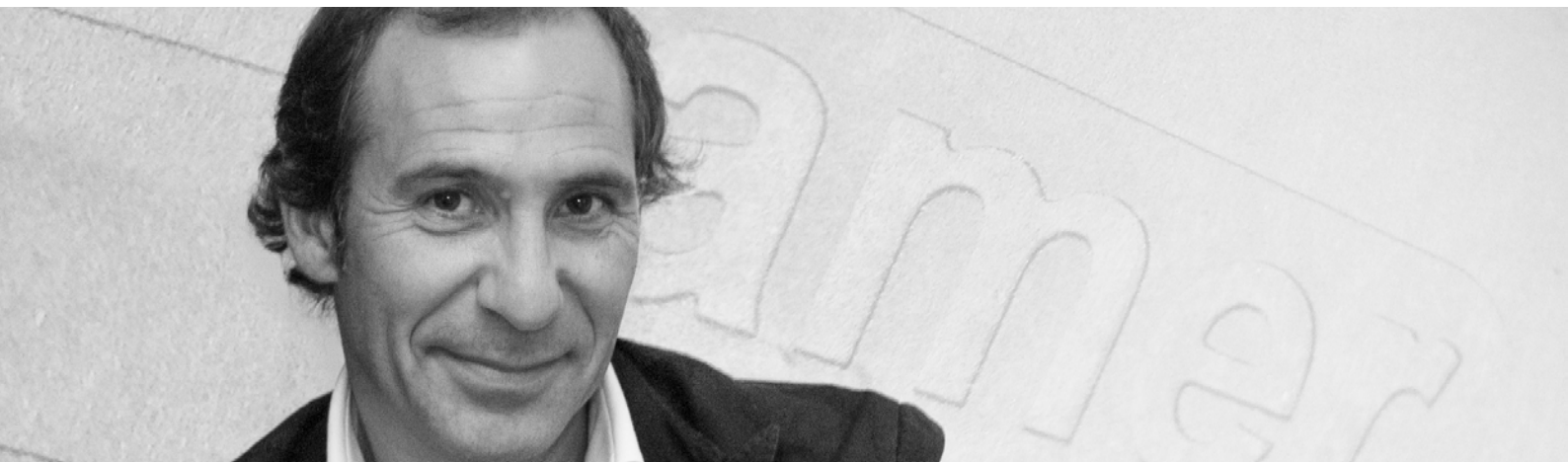
On request: electromagnetic brake, electronic driver, encoder.

STEERING SYSTEMS



Model	Transmission	Voltage	Gearbox	Optional **	BLS POWER
		DC [V]			
BY HAND	chain with tensioner	---	---	shaft custom	---
BY WIRE	chain with tensioner	12 ÷ 180	right angle worm gear	encoder, controller for steering system, electronic driver	✓
POWER STEERING	---	12 ÷ 180	parallel axis	encoder, electronic driver, thermal sensor, customized shaft and frame configuration available	✓

** Upon request.



THE VALUE OF **PEOPLE** BEHIND THE PRODUCT.

Today we talk about the world, borders have no sense anymore.

Being a leader in the global market means to be present where the market calls, prepared to satisfy customer requirements, with people able to solve needs at 360 degrees.

To make this happen, to get the best results, you need to work in Team.

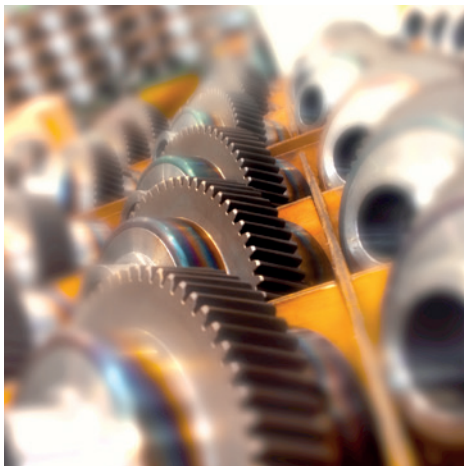
Behind every Amer product, every goal, there is the energy and the work of a group of people prepared to face, at their best, the challenges that the market offers.

Lorenzo Venegoni
Export Manager - AMER S.p.A.



ALL IN **ONE HAND**

Every single component is developed and double checked within the Group. From copper to packaging, from assembly to final test. On all our motors, gearmotors and traction solutions, we are able to maintain the **highest quality standards**, to meet our customers' expectations.



CUSTOM AS A STANDARD

AMER is a dynamic company that develops out-of-standard and customized solutions.

Thanks to a high skilled professional team, our projects are developed in co-design with the customers, to guarantee high quality results.

We deliver a **different approach** for the solution: our components can be modified according to your needs, you don't need to modify your product to install ours!



R&D, OUR DAILY BUSINESS

A strong focus on research and continuous investments in technology, allow us to be one step ahead. This makes AMER an attractive partner for Companies trying to undertake new projects in all market applications.

At AMER we don't only think about R&D, we work together within the Companies of the Group, to provide seamlessly integrated solutions to all our partners.

It's a matter of **teamwork!**
Are you ready for new challenges?



DELIVERY AS A **NEW START**

Every production phase, from the design and selection of materials through to manufacture and after-sales assistance, complies with the strictest international and organization standards.

The delivery of the finished product is just the beginning of a new work-in-progress!



AMER S.p.A. Via Maestri del Lavoro, 1
36078 Valdagno | Vicenza | Italia

T +39 0445 400200
F +39 0445 431237

amer@amer.it
amer.it

